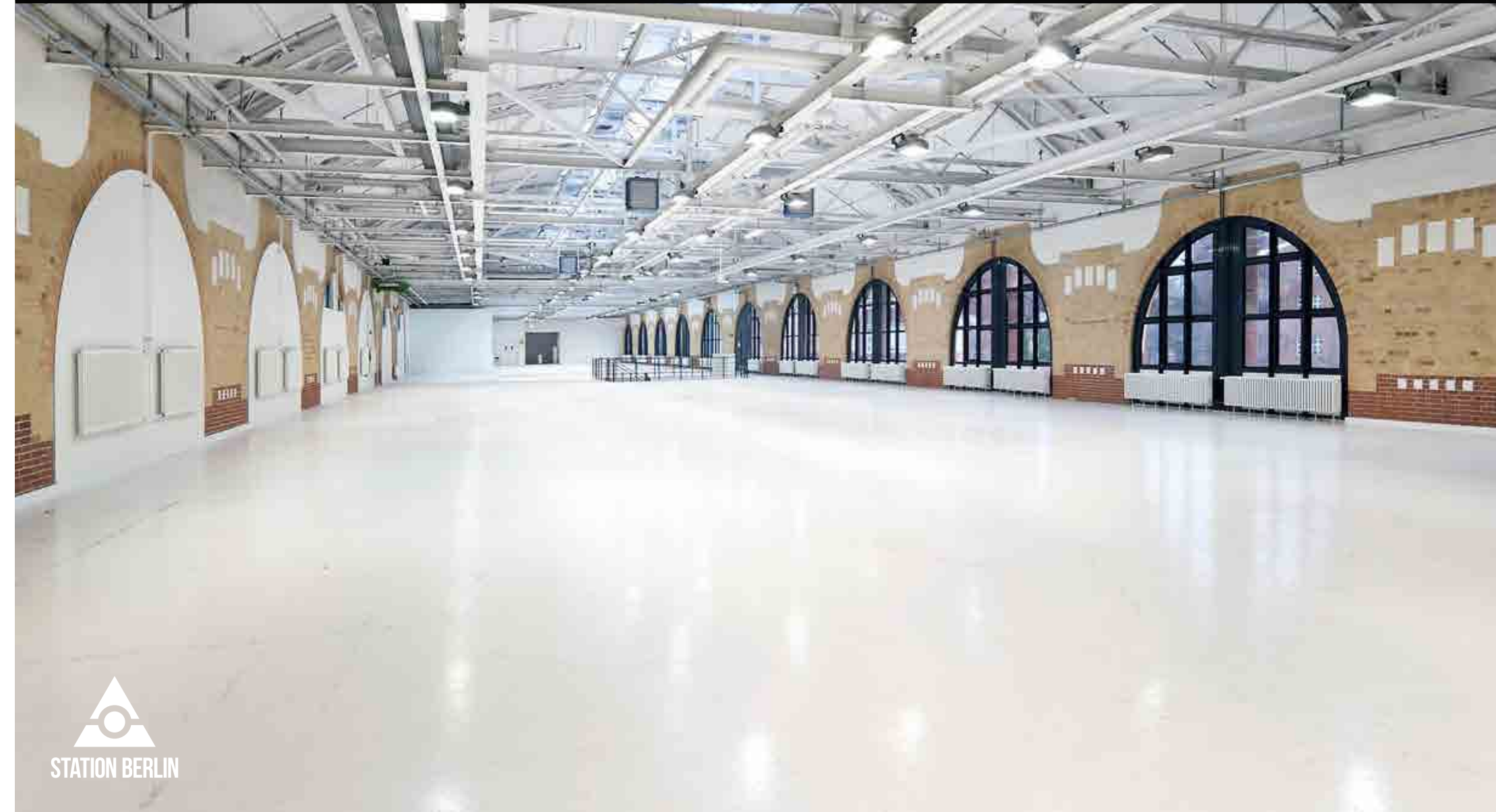


HALL 5

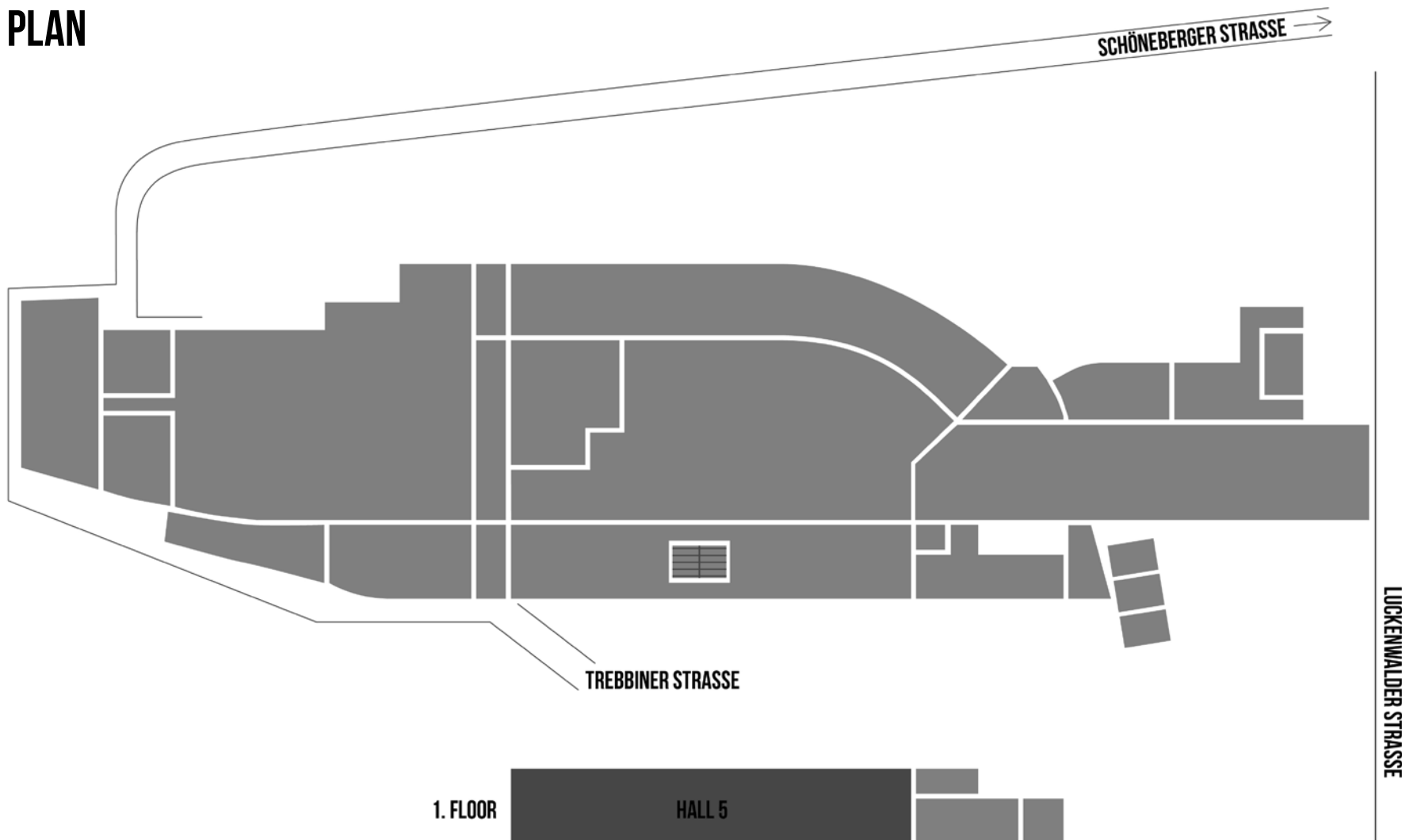
STATION BERLIN | EIGHT HALLS. 23,000 SQUARE METRES OF SPACE. INFINITE POSSIBILITIES.

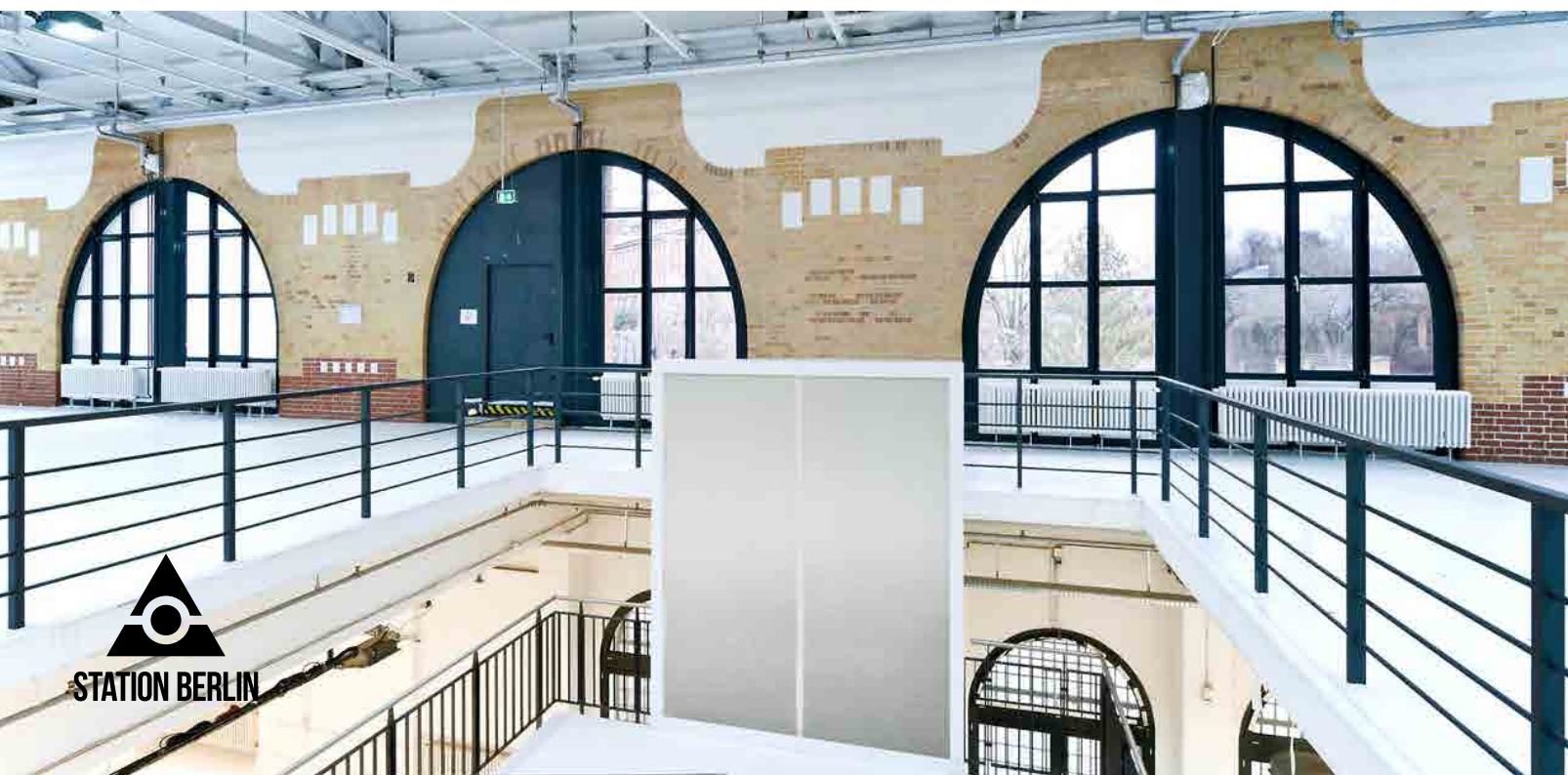


STATION BERLIN

HALL 5

GROUND PLAN





HALL 5



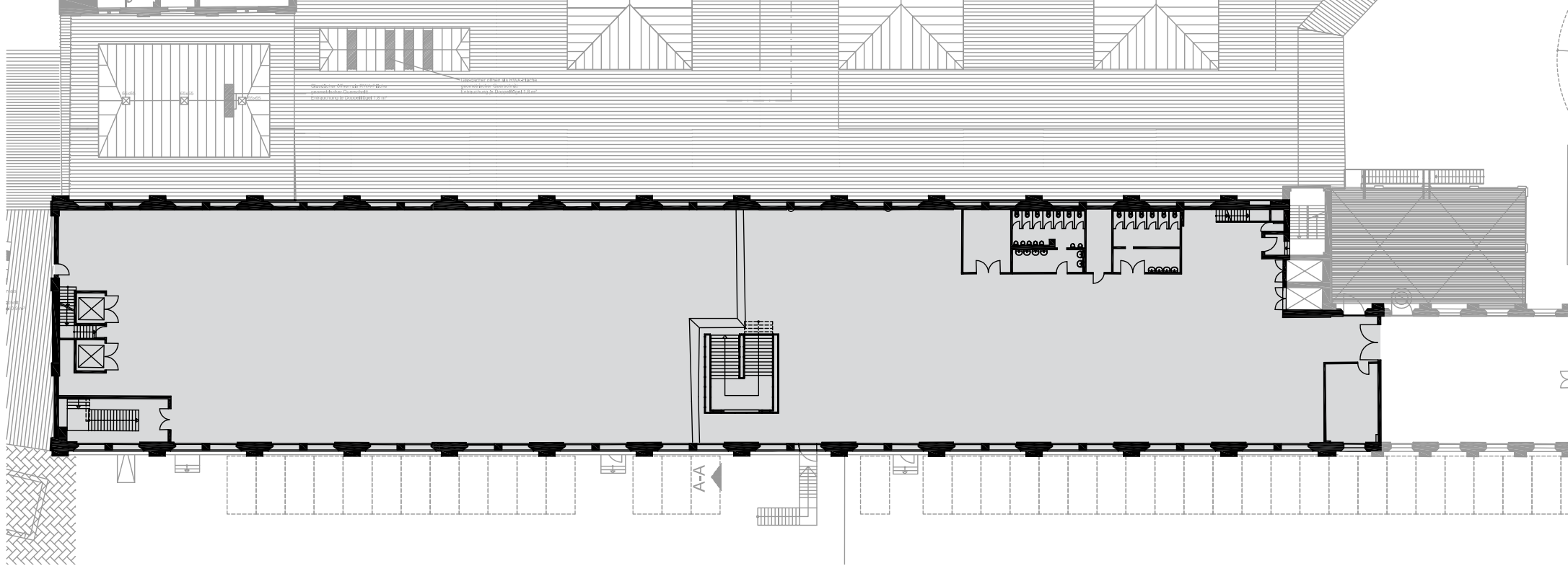


HALL 5

USE

With its 11.20m high vaulted ceilings, Hall 5 conveys a sense of unbridled spaciousness and leaves anyone who enters for the first time, and walks up the broad staircase, awe struck.

Yellow masonry, white plaster and large window surface areas give it an open and elegant appearance. In addition to the stairs, four freight elevators conduct passengers and equipment to the upper floor.



HALL 5

INFO

Floor space	2,100m ²
Dimensions	105 x 20m
Clearance height	11.20m
Lamp height	4.60m
Level	First Floor

SEATING

Theatre	1,000 Seats
Gala	600 Seats
Banquet	800 Seats
Without seating	2,1000 Standing

OTHER

Power	Yes
Water	Yes
LAN/WiFi	Yes/Yes
Truck/car access (via ramp)	No/No
Heating/Air Conditioning	Yes/No
Blackout	Optional